

W

WINDOW  
FRANCE

NEWSWINDOW#11

# energetic

COLLECTION  
ATHLETICS  
dynamic living  
sculptures

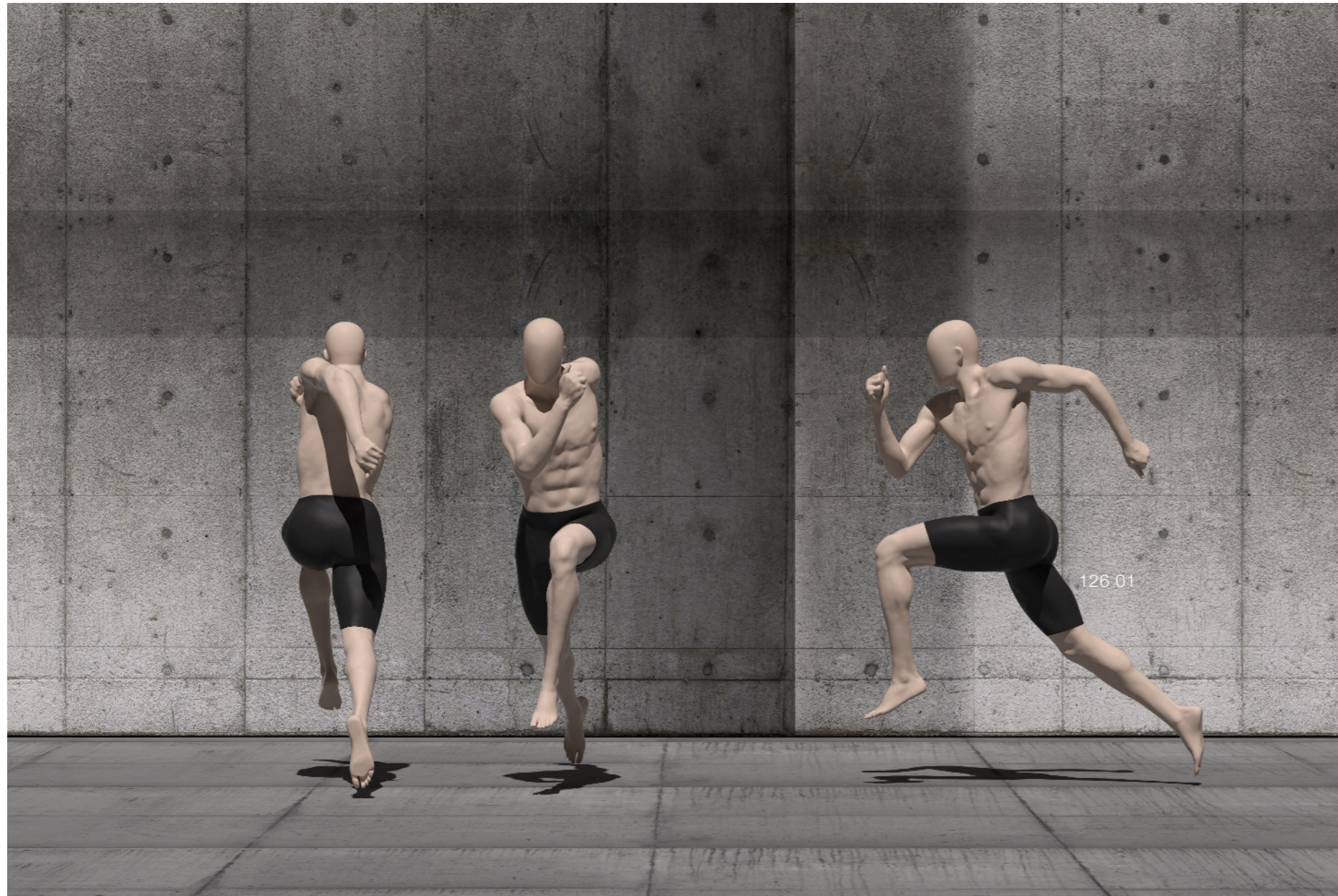
126 01

evolution  
inspiration  
revolution  
innovation

The image features three mannequins in athletic wear (black and orange) performing backbends against a grey concrete wall. They are positioned in a row, each in a different pose. A horizontal orange band is overlaid across the middle of the image, containing the text 'ENERGETIC SHOWSTOPPERS'.

ENERGETIC SHOWSTOPPERS

123 01



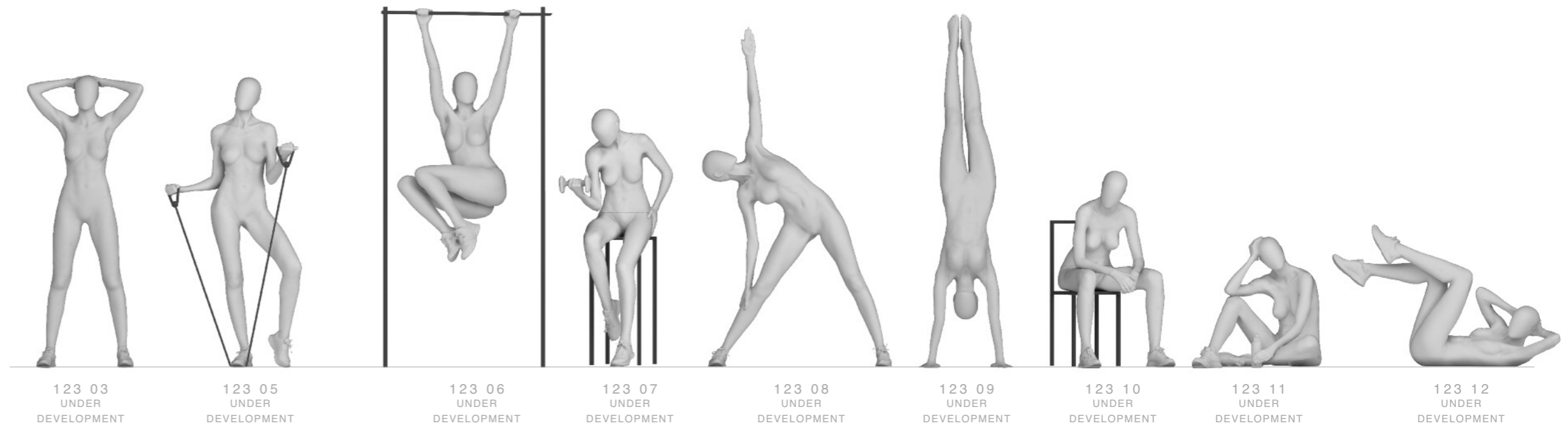
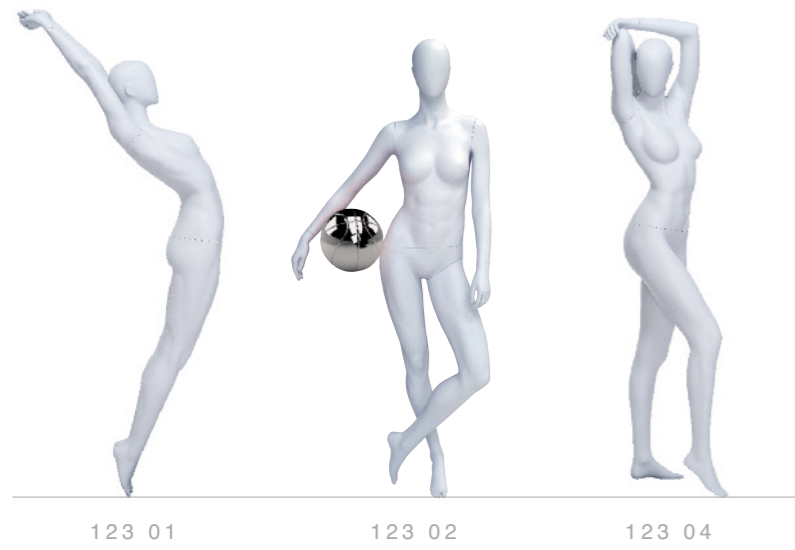
IT'S WITH A MOVING SUBJECT THAT WINDOW FRANCE'S 3D TECHNOLOGY ENTERS INTO ITS OWN. THE DNA FACTORY'S REVOLUTIONARY IMAGE CAPTURE FACILITY CAPTURES POSITIONS IN FULL MOVEMENT IN A FRACTION OF A SECOND, CREATING LIVING DYNAMIC SCULPTURES.

THE MANNEQUINS OF THE ATHLETIC COLLECTION HAVE DYNAMIC SPORTIVE BODIES WITH HARMONIOUS TONIC MUSCLES.



123 02

COLLECTION 123 ATHLETICS WOMEN



ACCESSORIES



HEAD:

STANDARD FINISH :



FITTINGS & BASES:  
METAL BASE ONLY (GLASS BASE NOT AVAILABLE).  
CALF ROD ONLY (FOOT FITTING NOT AVAILABLE).

THE MEN'S COLLECTION IS AVAILABLE IN EGGHEAD VERSION. THERE IS A CHOICE OF FEET - EITHER WITH A STANDARD BARE-FOOT OR WITH A REMOVABLE SCULPTED SPORTS SHOES.

COLLECTION 126 ATHLETICS MEN



	CM	INCH
HEIGHT	185,5	6'1"
BUST	95	30 3/4"
WAIST	77	30 3/4"
HIPS	108	42 1/2"

126 01\*



126 02  
UNDER  
DEVELOPMENT



126 03  
UNDER  
DEVELOPMENT



126 04  
UNDER  
DEVELOPMENT



126 05  
UNDER  
DEVELOPMENT



126 06  
UNDER  
DEVELOPMENT



126 07  
UNDER  
DEVELOPMENT



126 08  
UNDER  
DEVELOPMENT



126 09  
UNDER  
DEVELOPMENT

ACCESSORIES



SP\_BSKTBALL



SP\_WBOTTLE



SP\_KTLBELL



SP\_MSNEAKERS  
FOR REF 126 01 ONLY



SP\_FITBELL  
UNDER  
DEVELOPMENT



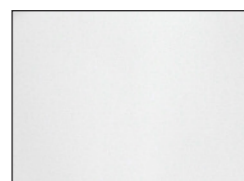
SP\_BOXGLOVES  
UNDER  
DEVELOPMENT

HEAD:

STANDARD FINISH: FOOT OPTIONS:



EGGHEAD WITH EARS  
REF: Q4



REF: LIGHT GREY



\*REMOVABLE SNEAKERS  
IN OPTION FOR REF: 126 01



REALISTIC FEET  
FOR REF: 126 01

FITTINGS & BASES:  
METAL BASE ONLY (GLASS BASE NOT AVAILABLE)  
CALF ROD ONLY (FOOT FITTING NOT AVAILABLE)



CAMELEON  
COMPONENT  
MAKE-UP  
SYSTEM  
P A T E N T  
P E N D I N G

## W I N D O W F R A N C E

y o u r i d e a l p a r t n e r

WINDOW FRANCE is a world leader of mannequin design and production and one of the major catalysts of product innovation in the visual merchandising market.

It has earned its reputation in the market by quite simply being **CONSTANTLY CREATIVE AND INNOVATIVE** and by assuring the highest levels of **PROFESSIONALISM AND RELIABILITY** available in the world.

WINDOW FRANCE offers its clients a level of design and technical know-how second to none in the world today as well as a quality and capacity of production to satisfy the most discerning customer.

For more information on WINDOW FRANCE and its product lines please browse our web site or contact a consultant on + 33 (0)4 93 29 21 41.

[www.windowfrance.com](http://www.windowfrance.com)

#### SHOWROOMS:

WINDOW FRANCE  
43, rue Réaumur - 75003 **Paris** - **FRANCE**  
Phone : +33 (0)1 40 29 40 00 - [contact@windowfrance.com](mailto:contact@windowfrance.com)

WINDOW FRANCE  
138 West, 25<sup>th</sup> Street - New York City, **New York** 10 001 - **USA**  
Phone: +1 (646) 559-4047 - [sales@windowfrance.com](mailto:sales@windowfrance.com)

#### HEADQUARTERS:

MAPI - Moulages et Arts Plastiques Industriels  
Sarl au capital social de 106 714,31 €  
Ilot U25 3<sup>e</sup> casier ZI de Carros - 06510 Le Broc - **FRANCE**  
RCS Grasse B 334 832 326 - Siret : 334 832 326 00022  
TVA Intracom : FR07 334 832 326

Window Mannequins USA Inc. dba Window France  
C/O DEBORAH NILSON & ASSOCIATES PLLC  
10 e 40<sup>th</sup> st ste 3310 - NY 10016 New York - **USA**  
Ein Number : 37-1843184

e v o l u t i o n  
i n s p i r a t i o n  
r e v o l u t i o n  
i n n o v a t i o n

*find more inspiration  
on our web-site*

